



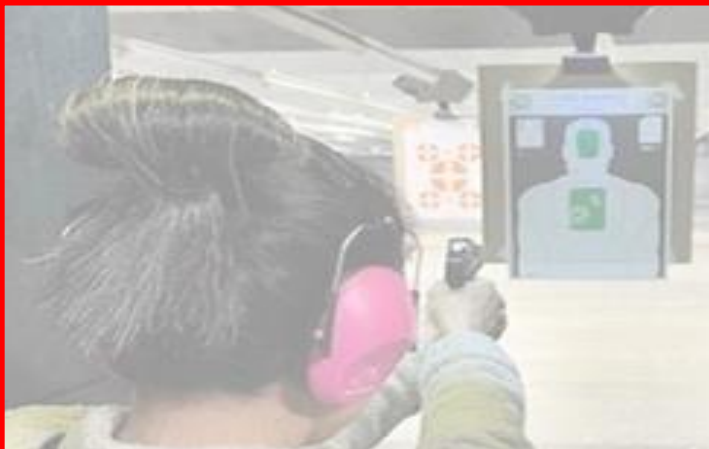
NEWSLETTER

– *March 2025* –

General Atomics Employees Recreation Association



GA-ERA Upcoming Events.



**General Atomics Gun Club
Poway Weapons and Gear
March 27**

**General Atomics Camera
Club Photo Competition
March 21**





TABLE OF CONTENTS

◇ <u>ERA Information</u>	3
◇ <u>Board Members</u>	3
◇ <u>Board Meeting Schedule</u>	3
◇ <u>Frequently Asked Questions</u>	4
◇ <u>Additional Information</u>	5-8
◇ <u>ERA Upcoming Events</u>	9-10
◇ <u>ERA Clubs</u>	11-18
◇ <u>Classified Ads</u>	19-20
◇ <u>ERA Tickets & Merchandise</u>	21-34



ERA Information

ERA Board Members: 2025

OFFICERS

President [Tonya Aubuchon](#)
 Vice President [Marti Bieksha](#)
 Secretary Vacant
 Treasurer..... [Katherine Partain](#)

DIRECTORS

Adult Social Director..... [Nancy Bieri](#)
 Children’s Social Director [Kelsey Towne](#)
 High Desert General Director [Matthew Kernan](#)
 General Director [Sue Krause](#)
 Newsletter Editor [Mark Hobscheid](#)
 Vending Director..... [Cindi Nielsen-Castner](#)

OTHER

Webmaster [Gabe Samrock](#)

Immediate Past President: [Katherine Partain](#) (term ended December 2018)

*If you are interested in applying for any vacant position on an interim basis,
 please [contact the GA-ERA President](#).*

ERA Board Meeting Schedule: 2025

Most Board meetings are held via teleconference, normally on the third Tuesday of every other month, starting in January. Meetings are open to all ERA members (Club Presidents are especially encouraged to attend). Please contact the GA-ERA Secretary if you are interested in joining us.

January 21
July 15

March 18
September 16

May 20
November 18



ERA Information

Frequently Asked Questions

- **How do I place an ad in the Newsletter?**
 - All ads are to be placed on the GA ERA's Website.
 - Please email the Webmaster with your ad. In the subject line please enter "Website Ad"
 - See "Classified Ads Rules"
 - Email our Webmaster: [Gabe Samrock](#)
- **Any other questions?**
 - Contact the Newsletter Editor: [Mark Hobscheid](#)
- **How can I buy movie tickets with my ERA discount?**
 - All movie tickets must be purchased from a GA-ERA Store.
- **How do I order attraction tickets?**
 - Complete the ticket order form and send to the ERA office (see instructions on the form).
 - Most attraction tickets are electronic only and will be emailed to you.
 - The form requires credit card information.
 - No cash or checks accepted.
- **How do I order ERA or Predator merchandise?**
 - Visit a GA-ERA Store or satellite representative, or fill out an order form (GA/ASI/EMS Logo Merchandise or U.S. Air Force Predator Merchandise).
 - Follow the instructions for submission.
 - You will be contacted regarding payment and shipment of your items.
 - In many cases, the GA-ERA Store will deliver your order to your building or notify you when it is ready for pickup.
- **I remember seeing something for sale in an old newsletter. Where can I find it now?**
 - It may be in the [Newsletter Archive!](#)
 - The website maintains all newsletters from the current calendar year and the previous two years.



ERA Information

Classified Ad Rules—Website and Newsletter

1. The GA ERA does not charge a fee to advertise on its website.
2. Commercial ads will only appear on the website, not in the newsletter. The ERA Board reserves the right to make exceptions.
3. Commercial ads must offer GA ERA members a minimum of a 10% discount on prices and it must be ongoing as a requirement to advertise in the website.
4. Ads must be PDFs or image files (*.jpg, *.png, etc.).
5. Personal ads must have a GA-ERA member affiliation and use personal contact info (e.g., telephone number, email address), not GA contact info.
6. Commercial ads must use a telephone number other than a GA business telephone number.
7. The GA ERA Board, at its discretion, reserves the right to deny requests to post ads on the website, including, but not limited to, ads deemed illegal or inappropriate. Ads from real estate companies, lending agencies, financial planning agencies, or similar are not accepted.
8. The GA ERA does not endorse the vendors that advertise on its website.
9. All classified ads need to be renewed in January and July of each year. We do not automatically renew it for you or have a policy of notifying you that your ad is about to expire.
10. Please specify runtime when placing non-commercial ads.
11. We are all volunteers and must juggle ERA responsibilities with our regular GA jobs. If we make a mistake or miss something, please notify us and we will do our best to assist you in a timely manner.

Please submit ads via email to the Webmaster And Newsletter Editor

Webmaster: Gabe Samrock (Gabe.Samrock@ga.com)

Newsletter Editor: Mark Hobscheid (Mark.Hobscheid@ga.com)

Please make the subject line of your email:

“Website Ad” or “Newsletter Ad” as appropriate



ERA Information

ERA STORES ARE OPEN AS FOLLOWS:

Torrey Pines Mesa (Building G10, Room 700)
Telephone: (858) 455-3305 | Fax: (858) 455-3302
Open: Monday-Thursday, 11:30 am - 2:30 pm
ERA Office Manager: Linda Watson

ASI Poway A15 (Building A15, Room 2202)
Telephone: (858) 312-4133
Open: Monday-Thursday and Payday Fridays, 11 am - 4 pm
Staff Member: Diane Strand and Julia Solis

ASI Poway A17 (Building A17, Room 1016)
Telephone: (858) 525-6473
Open: Monday-Thursday , 11 am - 4 pm
Staff Member: Gessyca Schmitzerle

EMS Rancho Bernardo G92 (Building G92, Room 1152)
Telephone: (858) 676-7146
Open: Monday-Thursday, 11 am - 4 pm
Staff Member: Susan Johnston

Gray Butte Building 75 (Building 75, Office 1206)
Telephone: (661) 224-5842
Open: Monday and Wednesday, 6:30 am -2:00 pm
Tuesday and Thursday, 7:30 am - 4:00 pm
Staff Members: Veronica Nunez & Miriam Bolanos

ERA members only | credit card payment only
For additional information, questions, or concerns,
please contact our main office at (858) 455-3305 or era.office@ga.com.



ERA Information



WELCOME TO THE EMPLOYEES RECREATION ASSOCIATION

What is the ERA?

The GA ERA is a California-registered, non-profit organization for the benefit of the employees of General Atomics and its subsidiary and affiliate companies to facilitate recreational activities outside of work.

Who may join?

Eligible members are regular, full, and part-time employees, and retirees of General Atomics, its subsidiary and affiliate companies. This includes individuals who work at the Torrey Pines Mesa site, and those on long-term assignment at GA. Currently, Agency Temps are not eligible to join the GA ERA association.

WHY YOU SHOULD JOIN

Members receive quality recreation with cost savings on the following:

Discounts on:

- Attractions: tickets ordered online
- ERA-sponsored events and parties
- Sporting events
- Movie tickets
- Fitness Memberships
- See's gift certificates
- Travel Services
- And more

CLUBS:

Join one of our current clubs:

- Bible Club, Gun Club, Toastmasters (Poway)
- Reaper Fishing Club, Sailing Club, Camera Club
- Coming soon: Gun Club of the High Desert
- Tennis and Pickleball

Start a new club with your favorite interests

Other Perks you will enjoy as a member:

Newsletter

A newsletter is published periodically and also appears on our website. The newsletter gives you updated discount and event information. You may submit classified ads to run in the newsletter at no cost to you.

Merchandise

You may purchase GA, GA-ASI, or EMS logo clothing and gift items in stock at our ERA offices.

We also carry USAF logo Predator clothing and gift items in stock that you may purchase.

Please visit our website: www.ga-era.org for additional information and questions you may have regarding the ERA.

We have five ERA offices throughout San Diego County and Gray Butte. Consult the website to locate the office near you.

How to Join the ERA

PLEASE RETURN THE COMPLETED, SIGNED FORM TO ANY GA ERA Office

Interoffice Mail: Bldg. G10-700 or FAX: 858-455-3302 or e-mail to: ERA.Office@ga.com

Thank you for joining the ERA. The ERA appreciates your business.



ERA Information



**HIGH DESERT ERA STORE
NOW OPEN**



GRAY BUTTE BUILDING 75,
OFFICE 1207
ACROSS FROM THE CAFETERIA

STORE HOURS
MONDAY & WEDNESDAY 6:30AM -2:00PM

TUESDAY & THURSDAY 7:30AM-4:00PM

MORE INFO : contact Veronica Nunez
or Matthew Kernan

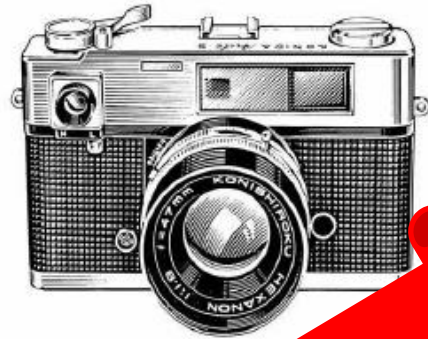
SM-ERA-HighDesert@ga.com



ERA Upcoming Events

GENERAL ATOMICS CAMERA CLUB

WEB <http://gacameraclub.com/>
CONTACT gacameraclub@gmail.com
FOLLOW [@gacameraclub](#) on Instagram

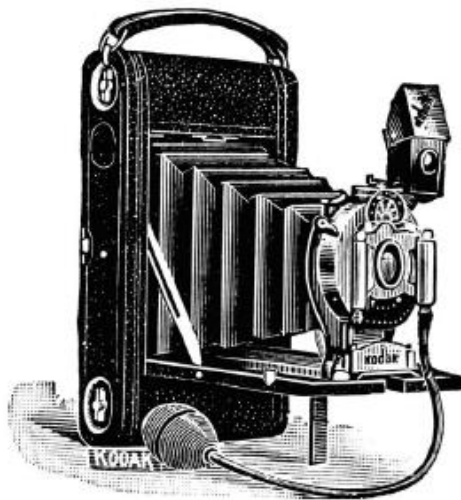


Beginners are welcomed and encouraged to participate in the competitions to grow their photography knowledge.

Competitions:

- 1. Jan 24, 2025
- 2. Mar 21, 2025
- 3. May 16, 2025
- 4. Jul 25, 2025
- 5. Sep 19, 2025
- 6. Nov 14, 2025

Free to visit at any of the competitions.
To participate, club membership is \$10 for members.
Open to active and retired GA personnel.



[GA ERA Camera Club Website]

Contact Us by email if interested in joining or simply getting onto the email list.



Pew-Pew!!

GA ERA GUN CLUB 2025 SCHEDULE Pencil in these dates!

- ✓ ANNUAL GENERAL MEETING – JAN 8TH
- ✓ SD COUNTY DESERT SHOOT – FEB 22ND
- POWAY WEAPONS & GEAR – MAR 27TH
- SPORTING CLAYS SHOTGUN* – APR 27TH
- PALA LONG RANGE SHOOTING – JUN 6TH
- PAINT BALL* – JUL 18TH
- PUMPKIN CARVING SHOOT – NOV 7TH
- PWG CHRISTMAS SHOOT & RAFFLE – DEC 10TH

ALL DATES ARE SUBJECT TO CHANGE. CHECK EMAIL OR TEAMS

PAGE FOR LATEST INFO. *INDICATES RSVP EVENTS

WANT TO JOIN THE ERA GUN CLUB?
FOR CONTACT INFORMATION &
MEMBERSHIP/WAIVER FORM,
VISIT WWW.GA-ERA.ORG/GUN
OR USE QR CODE →





ERA Clubs

Club	Contact Name
Bible	Katherine Partain
Camera	Ravi Kapadia
Gun Club	Jim Filak Gary Frost
Reaper Fishing Club	David Gaffney Paul McCarthy
Sailing	Greg Herbster Ed Bowles Maynard Herting
Toastmasters - Poway	Jason Fredrick

Don't forget to check out the Club pages on the ERA website:

<https://www.ga-era.org/clubs.html>

See next pages for information on current Club activities.



GA-ERA Bible Club

GA ERA Bible Club

The Bible Club is currently holding weekly Bible Studies via teleconference. They meet most Mondays, from 12:00 noon until 1:00 p.m., holidays excluded.

The meeting structure is:

- Praises, prayer requests, and opening prayer
- Format is Book, Chapter, and Verse
 - Divide up the number of verses in a chapter by the number of people present, and take turns reading the verses
 - Discuss the verses in historical content, relationship to the rest of the Bible, and applicability to one's daily walk with the Lord
- Closing prayer

They are currently studying in the book of John.

If you would like to join them, please contact Katherine Partain at: katherine.partain@ga.com and ask to be added to their e-mail list. Reminder e-mail notices go out Monday mornings with the call-in telephone number.



GA-ERA Bible Club

GENERAL ATOMICS BIBLE CLUB 2024 MEMBERSHIP FORM

ARTICLE II. OBJECTIVES AND ORIENTATION

The purposes of this club include the following:

1. To study the Bible.
2. To promote the normal understanding of the words of scripture in their historical context, and their contemporary application through the systematic reading and inductive study of the old and new testaments of the Bible.
3. To promote biblical fellowship.
4. To encourage one another in biblical living, i.e. in love, joy, peace, patience, kindness, goodness, faithfulness, gentleness, and self-control, as listed in Galatians 5:22 & 23.
5. To pray for the needs of all the club members and for the company management (I Timothy 2:1, 2).
6. To provide an appropriate forum for the presentation and/or discussion of particular issues of interest to the club through films, guest speakers, etc.

Theological Orientation

The theological orientation of the General Atomics Bible Club presumes:

1. The Bible is the fully inspired and infallible word of God
2. The Trinity—The eternally existing Triune God: the Father, Son, and Holy Spirit
3. Jesus Christ is the only begotten Son of God, fully God and fully man
4. Salvation by grace through faith in the atoning death and resurrection of Jesus Christ

ARTICLE III. MEMBERSHIP

Section 1. Eligibility

All regular employees of General Atomics, its subsidiaries and affiliates, and retirees of General Atomics, and employees on the General Atomics Mesa are eligible for membership, regardless of theological orientation.

Club members must be ERA members in good standing for the Bible Club to be eligible to receive ERA allotment funds for said members.

Section 2. Member

A member is one who has applied for membership, has been accepted, is current in his/her club dues and does not persist in promoting denominational differences at club activities.

Bible Club Dues are \$1.00 per year ERA Dues are \$15.00 per year

GA ERA 2024 MEMBERSHIP APPLICATION

NAME: _____ EXT: _____

COMPANY OFFICE ADDRESS: _____ E-mail address: _____

Are you a member of the ERA Yes: _____ No: _____ Chapter Name _____

Please mail completed form and club dues to: Katherine Partain in Bldg. G92-2002

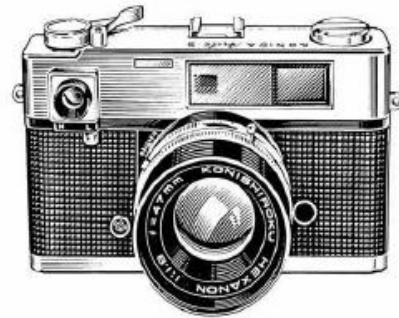


ERA Clubs

GA-ERA Camera Club

GENERAL ATOMICS CAMERA CLUB

WEB <http://gacameraclub.com/>
CONTACT gacameraclub@gmail.com
FOLLOW [@gacameraclub](#) on Instagram



Beginners are welcomed and encouraged to participate in the competitions to grow their photography knowledge.

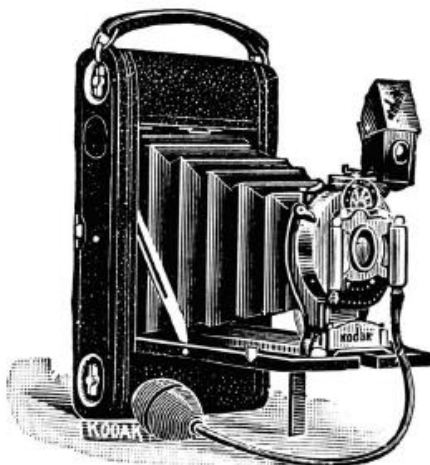
Competitions:

1. Jan 24, 2025
2. Mar 21, 2025
3. May 16, 2025
4. Jul 25, 2025
5. Sep 19, 2025
6. Nov 14, 2025



Feeding Time, by Ravi Kapadia

Free to visit at any of the competitions.
To participate, club membership is \$10 for 2025.
Open to active and retired GA personnel.



[GA ERA Camera Club Website]

Contact Us by email if interested in joining or simply getting onto the email list.



GA-ERA Gun Club

GA ERA GUN CLUB 2025 SCHEDULE Pencil in these dates!

- ✓ ANNUAL GENERAL MEETING – JAN 8TH
- ✓ SD COUNTY DESERT SHOOT – FEB 22ND
- POWAY WEAPONS & GEAR – MAR 27TH
- SPORTING CLAYS SHOTGUN* – APR 27TH
- PALA LONG RANGE SHOOTING – JUN 6TH
- PAINT BALL* – JUL 18TH
- PUMPKIN CARVING SHOOT – NOV 7TH
- PWG CHRISTMAS SHOOT & RAFFLE – DEC 10TH

ALL DATES ARE SUBJECT TO CHANGE. CHECK EMAIL OR TEAMS

PAGE FOR LATEST INFO. *INDICATES RSVP EVENTS

WANT TO JOIN THE ERA GUN CLUB?
FOR CONTACT INFORMATION &
MEMBERSHIP/WAIVER FORM,
VISIT WWW.GA-ERA.ORG/GUN
OR USE QR CODE →





GA-ERA Gun Club

A photograph of a person from behind, wearing a white sweater and large pink earplugs, aiming a handgun at a target in a shooting range. The target is a silhouette with a green center. The range has a concrete floor and overhead lights.

GA ERA GUN CLUB

**HELLO MEMBERS
IF YOU HAVE NOT PAID FOR 2025,
IT'S TIME TO PAY THE \$1 DUES**

**IF FOR SOME REASON YOU ARE NOT
GETTING EMAILS FROM THE CLUB,
PLEASE CONTACT THE PRESIDENT**

JAMES.FILAK@GA-ASI.COM



GA-ERA Gun Club

GUN CLUB PAYMENT METHODS

- Interoffice mail to Gary Frost at A40-1201 (include your name and if cash, hide in an additional envelope)
- Pay any of the other officers who will get your payment to me
 - President – Jim Filak (A23-1048)
 - Vice President – Roger Nielsen (A18-2031)
 - Poway Chapter Rep – David Childers (A29-1016)
 - Event Coordinator – Jason Walker (A23-1085A)
- Electronic payment via PAYPAL using QR below or this link <https://www.paypal.com/paypalme/gagunclub>
- Electronic payment via ZELLE using QR below or this info: GAERAGUNCLUB and my email Gary.Frost@ga-asi.com
- Pay at a Gun Club event (please bring exact change if cash)

Check or cash is fine. If using a check, make payable to GA ERA GUN CLUB

GA Gun Club



Ga Era Gun Club

Enrolled contact: Gary.Frost@ga-asi.com





ERA Clubs

GA-ERA Gun Club

GA ERA GUN CLUB

2024 Event Photos



PALA LONG RANGE





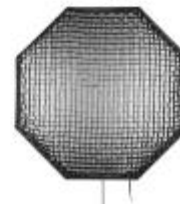
Classifieds

NEW & LIKE NEW PHOTOGRAPHY EQUIPMENT FOR SALE

- Lens, Tamron 45mm Nikon mount + Tiffen UV filter, \$300
- Case Logic Camera/Laptop Backpack (Black), \$60
- 600WS Flash (AC/DC) HSS TTL w/Remote Head, \$500
- Flashpoint R2 I-TTL 2.4g Wireless Xmtr for Nikon, \$20
- Reflector, 7.1", Bowens Mount, \$15
- Collapsible White Beauty Dish (34"), \$40
- 7' Parabolic Umbrella, stow bag, \$50
- Light Stand, 8.5', with stow bag, \$35
- 60" umbrella, white, shoot thru, \$15
- 30" Umbrella, Black/Silver, \$10
- 20" Umbrella, white, shoot thru, w/bracket, \$10
- Monitor Mount to Stand, 75 & 100mm VESA, \$15
- Gel Tungsten/Daylight Filters, 12 piece, 12 x 12, \$15
- 60" Softbox, Octa, Bowens Mount, \$60
- Backdrop Stand, 12.9' max width, \$130
- 20" Softbox, Hexa, for Flash, w/bag, \$50
- SpyderLensCal Autofocus Calibration Aid, \$35
- Various brackets, etc., \$5 - \$15 ea

Questions? Contact me for more info.

Gary Frost, 619-922-7707, m9410@cox.net





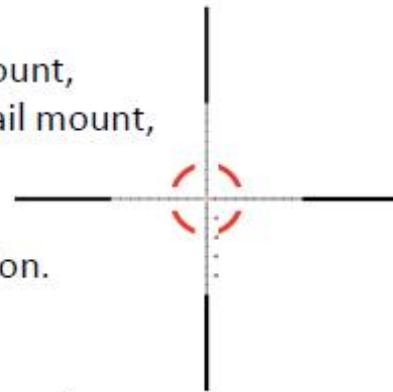
Classifieds

Rifle Scope + Mount

Trijicon 1-8x28 Credo HX Riflescope,
Red & Green Illuminated MOA Segmented
Circle Reticle, 34mm tube, locking adjusters,
\$1,000



Trijicon 34mm Riflescope Colt Knob Mount,
20 MOA Cant, Matte Black, Picatinny rail mount,
\$125



Used about 10 times. Like New Condition.
Includes original box, paperwork.

Gary Frost, 619-922-7707, m9410@cox.net





ERA Tickets & Merchandise

MARCH 2025 TICKET PRICE FORM PLEASE NOTE: THERE ARE NO PROCESSING FEES FOR MOST ATTRACTIONS

SAN DIEGO ATTRACTIONS	LA/ORANGE COUNTY	Additional Ticket Offers
Belmont Park Unlimited rides wrist band \$46.59 + fees	Aquarium of the Pacific A:\$38.83 C:\$31.27 no fee	Snow Ski offers...see flyers on website
Birch Aquarium use promo code online only: General Atc	Big Bus Tours Los Angeles starting at \$35.88 no fees	Sherman Library & Gardens (Corona del Mar) ages 3+
Boomers Vista 4 Hour Pass ages 4+ \$23.93 no fees	Catalina Express	Buy 2 Get 1 Free \$12.16 B3G1free \$18.13 B4G1free \$23.10 no fees
City Fun Center Poway 1/2 bowling or mini golf (New)	Tickets not currently available	3 Quest Challenge: A Clue-Gathering Adventure From \$7.00 (2Hr) no fees
City Cruises by Hornblower: call ERA for pricing	Catalina Island Company tours (see flyer)	Boomers Irvine, unlimited day pass all ages \$28.75 no fees
Flagship Cruises & Events Call ERA or pricing	Academy Museum of Motion Pictures	San Francisco Bay Area
Fleet Science Center A:\$24.95 C:3-12 \$20.95 S:\$22.95 no fee	A: 18+\$21.04 Senior 62+ \$15.99 Child 0-17 Free no fees	Aquarium of the Bay SF 13+ \$25.91 (4-12) \$18.00 65+ \$21.96 no fees
Ghosts and Gravestones Tour: From \$34.98 no fees	Dana Wharf Sportfishing (see flyer)	CA Great America in Santa Clara Ages 3+ Any day \$45.80 no fees
IFLY Indoor Skydiving San Diego ages 3+ \$86.45 no fees	1/2 Day Ages 15+ from \$51.75 3/4 Day Ages 15+ from \$70.15 no fee	Go San Fran. Explorer Pass From: \$51.92 Inclusive pass from \$73.92 no fees
Legoland 1 day Legoland from \$63.04 call ERA for pricing	Whale & Dolphin Watching from \$30.16 no fees	Skyline sightseeing San Francisco tours from \$48.52 (new)
1Day +SeaLife Hopper Kids promo from \$38.94	Dana Wharf Organic Cellar Wine Cruise	Escape the Rock from \$26.40 no fees
Midway Aircraft Museum	21+ from \$53.50 no fees	Alcatraz Hop On Hop Off bus tour adult \$127.19 child 3-12 \$93.27 no fees
A:\$33.07 Youth ages 4-12: \$22.05 no fees No senior discount	De Young Museum A:\$20.00 C:0-17 free. Sen:\$17.00 no fees	GIFT CERTIFICATES & CARDS
Old Town Trolley Tours: 1 day from \$27.83 2days from \$47.70 no fee	Dinner Detective Murder Mystery	ERA Gift Card. Purchase any denomination. No fees
S.D. City Lights Night Tour Ages 4+ from \$36.57 no fees	Age 13+ (LA) \$72.75 (OC) \$73.79 no fees	See's Candy gift card \$22.00 (worth \$25.00 when redeemed in store)
Safari Park A: \$63.43 C: 3-11 \$55.08 no fees	Disneyland: call ERA office for current pricing	Greeting Cards: \$1.50 Gift Bags: SM-\$2.50 LG-\$4.50 plus select tax
2-Visit Pass Adult(12+): \$124.42 Child (3-11): \$114.70 no fees	One day tickets not available.	MOVIE TICKETS
San Diego Zoo A: \$63.43 Child 3-11 \$55.08 no fees	Castle Park Single day \$16.43 no fees	AMC BLACK UNRESTRICTED \$11.50
2-Visit Pass Adult(12+): \$124.42 Child (3-11): \$114.70	The Escape Game Irvine	ANGELIKA/READING RESTRICTED \$10.50
Sea World San Diego Any single day Ages 2+ \$82.10 no fees	Mon-Thurs ages 5+ \$38.15 Fri-Sun ages 5+ \$42.51 no fees	REGAL BLUE UNRESTRICTED \$10.50
Fun Card Ages 3+ \$110.73 Mon.-Thurs \$69.54	Ifly Indoor skydiving Ontario Ages: 3+ \$86.45 no fees	REGAL ULTIMATE MOVIE PACK \$30.00 Please note that
Silver Pass ages 3+ \$144.45 no fees	Hollywood (ages 3+): \$67.40 no fees	THE LOT GIFT CARD (worth \$23.50) \$21.50 an upcharge of
Sea world and Sesame Place two parks ages 3+ \$90.94 no fees	Knott's Berry Farm	CINEPOLIS tix will be discontinued \$20.00 \$1.50-\$8.50 may
Sesame Place	One day ages 3+ \$58.30 Date specific	CINEMARK UNRESTRICTED \$10.75 be charged at the
Single any day (ages 3+) \$44.96. Single day kids free \$88.59	Knott's Soak City Closed for the season	US Postage 20 Forever stamps \$14.00 theater
Silver Pass ages 3+ \$130.01 no fees	Medieval Times Dinner Theater A: \$62.84 C: \$37.77 no fees	HEALTH & FITNESS
SeaWorld & Sesame Place (ages 2+) \$90.94 no fee	Mulligan Family Fun Ctr. Murrieta Fun Card \$34.45 no fees	LA Fitness
San Diego Go Pass	Pirates Adventure Dinner Theater	24 Hour Fitness Brazilian Jiu Jitsu Aca.
Explorer Passes from \$82.72 All inclusive passes from \$100.32 no f	Adult \$61.60 Child 3-11 \$37.40 no fees	The Boxing Club F45 Gym(4S Ranch)
Call ERA for details available for 13 different U.S. cities	No birthday special with this discount	Orange Theory Fitness Core Power Yoga
Grapeline Wine Tours adults M-Th \$129.80 no fees	Six Flags Magic Mountain	A Time To Dance Studio 760 Fitness
Fri & Sun \$138.80 no fees Temecula. Other tours available	Prices from \$47.52 Date specific pricing	Fitness Quest (Formerly Eat the Frog) Stretch U
San Diego Seal Tours at Seaport Village 1 day from \$27.83	Six Flags Discovery Kingdom Vallejo	Please call the ERA office for promo code pricing for all gyms. 858 455 3305
SD Museum of Natural History A:\$21.99 C:3-11 \$12.99 Sen. \$17.99	Any day \$32.90	No refunds or exchanges on tickets. Some tickets offer a \$1.00 fee per ticket for the option
San Diego Speed Boat Adventures: From \$156.45 2 person boat	Universal Studios (see flyer) call ERA for pricing	of requesting a refund. Please plan and order your tickets at
Urban Adventure Quest: San Diego group of 2-5 ages 5+ \$38.76	Yosemite National Park skyline sightseeing from \$176.37	least a couple of days ahead of the time you need them.
Urban Adventure Quest: Balboa Park Group of 2-5 \$38.76	Warner Bros. Studio Tour Hollywood	If you have not received your tickets within 24 hours, please
Whaley House Tours: One Day Adult: \$11.93 C: \$7.95 no fees	ages 11+ Tours from \$55.30 no fees	contact the ERA Office at (858)455-3305 Mon.-Thurs. 11:30-2:30
	TCM Classic Films Tour from \$72.66 (New)	



ERA Tickets & Merchandise

ERA ITEMS OF THE MONTH



GA logo Coaster
\$19.00



GA logo Beer Mugs \$10.00 Each



Front



Back

USAF Predator T-Shirt

(sizes S-3XL) available in green or black
\$20.00



GA Logo Silver Business Card Holder \$10.00



GA Logo boxed spinner keychain. Globe on back side. \$7.00

All items available for purchase in our ERA stores.
Prices do not include sales tax
ERA office: 858-455-3305
Thank you, ERA Lucky Charms





ERA Tickets & Merchandise

[Visit our website](#) for a downloadable, form-fill version of the form.



EMPLOYEES RECREATION ASSOCIATION

For ERA use only

Date and time processed: _____

Order Number: _____

Ordered by: _____

ERA Ticket Order Form

Clear Form

INSTRUCTIONS:

(1) download form, (2) fill in all required information, (3) send to:

ERA.Office@ga.com | (858) 455-3302 (fax)

If you haven't received your tickets within 24 hours please call the GA-ERA office: (858) 455-3305.

All ticket orders must be received by 2:30PM to receive the ticket order that day. Order forms received after 2:30PM will be processed the next business day. (Note: GA-ERA offices are closed on Mondays.)

(Please print clearly and fill out completely)

Member name: _____

Credit Card Billing Address: _____

City _____ State _____ Zip Code _____

Phone Number _____ Alt Phone Number _____

E-Mail address: _____

(Personal Email addresses only, no GA/ASI email addresses please)

Name of Attraction: _____

Type of ticket you are ordering: _____

Date you are using this ticket: _____

Please list the names to be printed on each ticket: Please specify adult or child

1. _____ 2. _____ 3. _____

4. _____ 5. _____ 6. _____

7. _____ 8. _____

8 tickets is maximum per order.

Number of tickets: Adults: _____ X Cost per ticket _____ = \$ _____

Children: _____ X Cost per ticket _____ = \$ _____

Processing fee (if any): _____

Total cost for ticket order: \$0.00 _____

Method of Payment:

MasterCard Visa American Express Cash (No checks)

Member's Credit Card # _____

CVV2 Code: _____ Expiration Date: Month: _____ Year: _____

Card Holder signature: _____



ERA Tickets & Merchandise



EMPLOYEES RECREATION ASSOCIATION

These items do not include sales tax

Men's Clothing

GA/ASI/EMS Logo



Polo Shirts
Sizes S-3XL: \$35.00
35% Cotton 65% Poly



Sport-Tek Dry Zone Raglan Polo
Sizes S-3XL: \$35.00
100% Polyester



T-Shirts
Short sleeve
Sizes S-3XL: \$17.00
Pre-shrunk 100% cotton



Sport Zipper Jacket
Sizes S-XL: \$48.00
Sizes 2XL-3XL: \$50.00
100% Polyester



Button Down: Navy Dress Shirt
Sizes S-3XL: \$43.00 100% cotton
EMS Logo navy button down dress shirt
Cotton/Poly blend. Wrinkle resistant. \$43.



Button Down: White Dress Shirt
GA or ASI Logo
Sizes S-3XL: \$43.00
100% Cotton



Denim Long Sleeve Shirt
GA or ASI Logo
Sizes S-3XL: \$43.00



Fleece Jacket
Sizes S-XL: \$35.00
Sizes 2XL-3XL: \$40.00
100% Polyester



Panorama Bomber Jacket
Sizes S-3XL: \$70.00
35% Cotton 65% Polyester
EMS logo all sizes available
GA/ASI sizes very limited.



GA & ASI Challenger Bomber Jacket
Sizes S-3XL: \$65.00
Shell: 100% Nylon
Lining: 100% Polyester



**Hoodie
Zipper Front**
S-XL \$32.00
2XL-3XL \$36.00
50% Cotton/
50% Polyester



New Style Wind Jacket
Sizes S-3XL: \$55.00
Nylon/Polyester/Lined
ASI/EMS Logo only



Wind Jacket
Sizes S-3XL: \$48.00
Nylon/Polyester
GA/ASI logo only

Purchase these items through all ERA stores, You may send us an order form found on our website.
www.ga-era.org • Office: (858) 455-3305 • Email: era.office@ga.com



ERA Tickets & Merchandise



EMPLOYEES RECREATION ASSOCIATION

These items do not include sales tax

Women's Clothing

GA/ASI/EMS Logo



Polo Shirt
S-3XL: \$35.00
35% Cotton 65% Poly
GA/ASI logo only



**Nike Sport-Tek
Dry Zone Raglan Polo**
S-2XL: \$38.00
100% Polyester



Era T-Shirts
Short sleeve
S-3XL: \$17.00
60% Cotton, 40% Polyester



Button Down Dress Shirt
White only GA/ASI only
S-3XL: \$43.00
100% Cotton



Cardigan
S-XL: \$40.00
60% Cotton 40% Nylon



GA & ASI Fleece Jacket
Extra small-XL: \$35.00
2XL-3XL \$40.00
100% Polyester



Wind Jacket
S-XL: \$48.00 GA/ASI logo only
2XL-3XL: \$50.00
Nylon/Polyester/Unlined



Wind Jacket
S-3XL EMS logo only
Nylon/Poly/Lined \$55.00



Sport Zipper Jacket
S-XL: \$48.00
2XL-3XL: \$50.00
100% Polyester

Purchase these items through all ERA stores, or send us an order form found on our website.
www.ga-era.org • Office: (858) 455-3305 • Email: era.office@ga.com



ERA Tickets & Merchandise



EMPLOYEES RECREATION ASSOCIATION

These items do not include sales tax

Gift Merchandise

Accessories



Laptop Backpack
\$27.00
GA or EMS logo



Micro plush Blanket
With Carrying Straps
\$32.50
GA or EMS logo



Beach Towel
\$28.00
GA or EMS logo



**Igloo Avalanche
Cooler/Lunch Bag**
\$16.50
GA logo



Large Cooler
\$28.00
12 can capacity with shoulder strap
GA or EMS logo
Small cooler (not shown) EMS logo only
\$16.50



Coaster
\$19.00
GA logo



Sport Duffel Bag
\$32.50
GA or EMS logo

Boxed Keychain
\$7.00
GA logo only



Purchase these items through all ERA stores, You may email us an order form found on our website:
www.ga-era.org • Office: (858) 455-3305 • Email: era.office@ga.com



ERA Tickets & Merchandise



EMPLOYEES RECREATION ASSOCIATION

These items do not include sales tax

Gift Merchandise

Accessories

Challenge Coins

GA-EMS or GA-ASI

\$15.00 Each

GA-EMS



Front



Back

GA-ASI MQ-9A Reaper



Back



Front

GA-ASI Gray Eagle ER



Back



Front

GA-ASI Predator B



Back



Front

GA-ASI Protector



Back



Front

GA-ASI SkyGuardian



Back



Front

Purchase these items through all ERA stores or send us an order form found on our website.
www.ga-era.org • Office: (858) 455-3305 • Email: era.office@ga.com



ERA Tickets & Merchandise



EMPLOYEES RECREATION ASSOCIATION

Gift Merchandise

Office/Sport

These items do not include sales tax



4 In One Laser Pen
LED light, red laser pointer, stylus, and ball point pen.
\$14.50
GA or EMS logo



Ballpoint Pen
Black ink, with stylus
\$5.00
GA or EMS logo



Tuscany Rollerball Pen
Black ink, comes in velveteen pouch
\$9.00
GA or EMS logo



Meeting Book
Debossed GA or EMS Logo, Faux leather
\$25.00



Lanyard
\$5.00
GA/EMS/ASI



Logo Reel
\$7.00
GA logo only



Badge Gripper
\$1.00



General Atomics/EMS logo



General Atomics Aeronautical

Mouse Pads \$7.50



Baseball Caps
Solid: \$17.00
Mesh: \$17.00
GA/EMS/ASI logo



Business Card Holder
\$10.00
GA or EMS logo



Desk Clock \$40.00
GA logo only



Golf Towel with grommet
\$14.00
GA or EMS logo

SPECIAL OFFER: Golf towel & sleeve of 3 golf balls:
\$26.00

Titleist Golf balls
1 Sleeve (3 balls)
\$14.00



GA logo

You may purchase these items at any of our ERA stores.
Or you may fill out an order form found on our website: www.ga-era.org and Email to: era.office@ga.com.
Call our office (858) 455-3305



ERA Tickets & Merchandise



These prices do not include sales tax

Gift Merchandise

Drinkware



Beer Mug
\$10.00
GA or EMS logo



Coffee Mug
\$9.00
GA or EMS logo



Travel Mug
16 Oz double wall 18/8
stainless steel, foam insulated
w/ push on swivel lid
\$15.00
EMS logo only



30 Oz. Travel Coffee Mug
Double Walled
\$15.00
GA logo only



Pint Glass
\$10.00
GA or EMS logo



Vacuum bottle
(w/ laser engraved GA logo)
\$15.00
GA or EMS logo



Hot & Cold Tumbler
20 Oz (BPA free)
Double walled
\$13.00
GA or EMS logo



24 Oz. Hot and Cold Tumbler
Double Walled
\$13.00
GA logo only

You may purchase these items at any of our ERA stores.

Or you may fill out an order form found on our website: www.ga-era.org and Email to: era.office@ga.com.

Questions or comments? Call our office (858) 455-3305 • Fax: (858) 455-3302



ERA Tickets & Merchandise

[Visit our website](#) for a downloadable, form-fill version of the form.

GA ERA ORDER FORM
GA/ASI/EMS LOGO MERCHANDISE

Item	Size/Item	Quantity	Price	Total
GA & ASI CLOTHING				
MEN'S SHIRTS (S-XL, 2X, 3X)				
GA/ASI/EMS Button Down Dress Shirt 100% cotton (pick GA, ASI or EMS)			S-XL/ 2XL-3XL	
Navy Blue or White			All sizes	\$43.00
GA/ASI/EMS Polo Shirt 65% Poly 35% Cotton (Navy) (Pick GA, ASI or EMS)			All sizes	\$35.00
GA/ASI/EMS Sport Polo Dri Weave 100% Poly (Navy) (Pick GA, ASI or EMS)			All sizes	\$35.00
Both Polo shirts available with breast pocket (ASI Logo only)			All sizes	\$35.00
GA/ASI/EMS Short Sleeve T-shirt preshrunk cotton (Navy) (Pick GA, ASI or EMS)			All sizes	\$17.00
GA/ASI Men's Wind Jacket (Navy) (Pick GA or ASI)				\$48.00/ \$50.00
EMS Men's Lined Wind Jacket				\$55.00
GA/ASI/EMS Zipper hoodie (Navy) (Pick GA, ASI or EMS)				\$32.00/ \$36.00
GA/ASI/EMS Panorama Bomber Jacket (Navy) (Pick GA, ASI or EMS)				\$70.00
GA/ASI/EMS Sport Zipper Jacket (Navy) (Pick GA, ASI or EMS)				\$48.00/ \$50.00
GA/ASI/EMS Fleece Jacket (Navy) (Pick GA, ASI or EMS)				\$35.00/ \$40.00
GA/ASI Challenger Jacket				\$65.00
WOMEN'S CLOTHING				
GA/ASI Button Down Dress Shirt 100% cotton (White) (Pick GA or ASI)			All sizes	\$43.00
GA/ASI/EMS Cardigan Sweater (Navy) (Pick GA, ASI or EMS)				\$40.00
GA/ASI/EMS Sport Zipper Jacket (Navy) (Pick GA, ASI or EMS)				\$48.00/ \$50.00
GA/ASI/EMS Nike Polo Dri Weave 100% Poly (Navy) (Pick GA, ASI or EMS)			All sizes	\$38.00
GA/ASI 3 Button Polo Shirt cotton (Navy) (Pick GA or ASI)			All sizes	\$35.00
EMS Lined Wind Jacket \$55 or GA/ASI Wind Jacket (Navy)				\$48.00/ \$50.00
GA/ASI/EMS V-neck T-shirt 60%cotton 40% poly (Navy) (Pick GA, ASI or EMS)			All sizes	\$17.00
BASEBALL HATS				
Baseball Hat Solid or Mesh Adjustable Back (Navy) (Pick GA, ASI or EMS)				\$17.00
GA & ASI MERCHANDISE				
GA/EMS LOGO MUGS & DRINKWARE				
GA/EMS Navy Coffee Mug				\$9.00
GA/EMS Navy Traveling Coffee Mug w/lid				\$15.00
GA/EMS Glass Beer Mug				\$10.00
GA/EMS Navy Vacuum Bottle				\$15.00
GA/EMS Navy Sport Hot/Cold Tumbler				\$13.00
GA/EMS Pint Glass				\$10.00
Challenge Coins: EMS, Pred B, SkyGuardian, Gray Eagle ER, Reaper, Protector				\$15.00
GA/ASI/EMS LOGO BUSINESS ITEMS				
GA, ASI or EMS Lanyard				\$5.00
Blue Lanyard Reel (no logo on it)				\$5.00
GA Logo Reel				\$7.00
GA Logo Coaster/Paper Weight				\$19.00
GA Desk Clock Clear				\$40.00
GA or EMS Silver Business Card Holder				\$10.00
GA or EMS Roller Ball Pen with velvet pouch				\$9.00
GA or EMS Four in One Laser Pen				\$14.50
GA Ballpoint Pen with Stylus Tip				\$5.00
GA or EMS logo Meeting Book debossed faux leather				\$25.00
GA Boxed Keychain				\$7.00
GA/ASI/EMS Mouse Pad				\$7.50
Badge Grippers				\$1.00
GA/EMS LOGO RECREATION ITEMS				
See's Candies Gift Certificate See's Gift Card				\$22.00
GA/EMS Micro Plush Blanket with straps (Navy Blue)				\$32.50
GA/EMS Beach Towel				\$28.00
GA Logo Sleeve of Titleist Golf Balls (3)				\$14.00
GA/EMS Golf Towel w/ Grommet				\$14.00
Golf Set Special (Sleeve of Golf Balls and Golf Towel)				\$26.00
GA Igloo Lunch Bag or EMS Small Cooler Bag				\$16.50
GA/EMS Large Cooler Bag				\$28.00
GA/EMS Laptop Backpack				\$27.00
GA/EMS Sport Gym Bag				\$32.50
U.S Post Office Forever Stamps- Book of 20				\$14.00
All Occasions Greeting Cards				\$1.50
Navy Blue Gift Bag (includes tissue)(small or large)				\$2.50 or \$4.50
GA ERA Member's Name:			Total:	
Phone Work EXT:	Cell:	Location:	Date:	\$

ERA Office: era.office@ga.com or Fax: 858-455-3302 or Call with Questions: 858-455-3305

The ERA Appreciates Your Business

These prices do not include sales tax.



ERA Tickets & Merchandise



EMPLOYEES RECREATION ASSOCIATION

These items do not include sales tax



Always Watching Pukka Brand Predator Cap
(Red Bill/Snap Back/High Profile Crown)
Solid or mesh
\$25.00



Always Watching beanie \$15.00



Predator Reel
\$6.00



RPA Shaker Bottle
\$13.00



Predator/Reaper Key Chain
\$7.00



Predator lapel/tie pins
Pred. B & Gray Eagle
\$7.00



Sea Guardian Lapel/Tie Pin (top)
Sky Guardian Lapel/Tie Pin (bottom)
\$7.00



Predator lanyard
\$8.00



Travel Coffee mug
\$15.00

USAF & Predator/Reaper Merchandise



3 Million Flight Hours (Front and Back)
Hunter/Killer Coin - \$11.00



Green Avis



Blue Avis



NEW

WWII Bombardment Squadron



25 Years of Service (Front and Back) - \$15.00



2 Million Flight Hours



5 Million Flight Hours



Avis Poker Chip Coin
\$8.00



Det 3 Unit Coin
\$11.00



Det 3 Plane coin
\$15.00



RPA Ceramic Coffee Mug (Blue or gray)
\$11.00

Purchase these items through all ERA stores, or send us an order form found on our website.
www.ga-era.org • Office: (858) 455-3305 • Fax: (858) 455-3302 • Email: era.office@ga.com



ERA Tickets & Merchandise



EMPLOYEES RECREATION ASSOCIATION

USAF & Predator/Reaper Merchandise



Front



Back

Made in the USA

Short Sleeve T-Shirt: Small – 3XL \$20.00



Front



Back

Keep Calm and Recon (Green or Black)

Short Sleeve T-Shirt: Small – 3XL \$20.00



SALE - 20 Year Anniversary
(Back is Plain Navy)

Short Sleeve T-Shirt \$10.00 (S-3XL)



Front



Back

Specs (Navy or Black)

Short Sleeve T-Shirt: Small – 3XL \$20.00

These items do not include sales tax

www.ga-era.org • Office: (858) 455-3305 • Fax: (858) 455-3302 • Email: era.office@ga.com



ERA Tickets & Merchandise



EMPLOYEES RECREATION ASSOCIATION

USAF & Predator/Reaper Merchandise



Front



Back

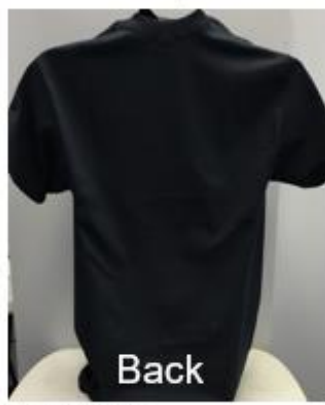
Major League Recon
Short Sleeve T-Shirt: Small – 3XL \$20.00



Front



Front



Back

Reaper in the Clouds
Short Sleeve T-Shirt: Small – 3XL \$20.00



Back

Hide & Seek
Short Sleeve T-Shirt:
Small – 3XL \$20.00



Front



Back



Front

Always Watching MQ-9 Reaper Short Sleeve Dri-Fit T-Shirt
Men's (pictured left) & Women's V-neck (pictured right) S-3XL \$25.00

These items do not include sales tax.

www.ga-era.org • Office: (858) 455-3305 • Fax: (858) 455-3302 • Email: era.office@ga.com



ERA Tickets & Merchandise

[Visit our website](#) for a downloadable, form-fill version of the form.

GA ERA ORDER FORM U.S. AIR FORCE PREDATOR MERCHANDISE

Item	Size/Item	Quantity	Price	Total
U.S. AIR FORCE CLOTHING				
SHORT SLEEVE MEN'S T-SHIRTS (S-3XL)			ALL SIZES	
Made in the USA (White)			\$20.00	
Specs (Blue or black)			\$20.00	
Keep Calm and Recon (Green or Black)			\$20.00	
Reaper in the Clouds MQ-9 (Black)			\$20.00	
Major League Recon (Gray)			\$20.00	
Hide and Seek (Black)			\$20.00	
20 Year Anniversary (Blue)			On sale \$10.00	
Always watching MQ-9 Reaper Dri-Fit MENS (Black)			\$25.00	
Always watching MQ-9 Reaper Dri-Fit V-Neck WOMENS(Black)			\$25.00	
U.S. AIR FORCE MERCHANDISE				
Predator Always Watching Cap solid or mesh (adjustable velcro back)			\$25.00	
Predator Keychain			\$7.00	
Predator Badge Reel			\$5.50	
Predator Mousepad			\$7.50	
Predator Holiday rocks glass			\$10.00	
Predator Lapel Pins: Pred B, Gray Eagle, Sky Guardian or Sea Guardian			\$7.00	
RPA Ceramic Coffee Mug (blue or gray)			\$11.00	
RPA Shaker Bottle			\$13.00	
U.S. Air Force Predator Det 3 Coin			\$11.00	
Avis Poker Chip Coin			\$8.00	
3 Million Hour Hunter/Killer coin			\$11.00	
25 years Anniversary MQ9 Reaper coin			\$15.00	
PREDATOR PATCHES				
Five million hour patch			\$7.50	
Reaper 2 Million Flight Patch			\$7.50	
Avis blue or green patch			\$7.50	
WWII Bombardment Squadron patch			\$7.50	
GA ERA Member's Name:			Total:	\$
Phone Work EXT:	Cell:	Location:	Date:	

ERA Office: era.office@ga.com or Fax: 858-455-3302 or Call with Questions: 858-455-3305

The GA ERA Appreciates Your Business ~These items do not include sales tax